

5380
EISENHOWER AVE



FOR LEASE

WAREHOUSE & OFFICE SPACE

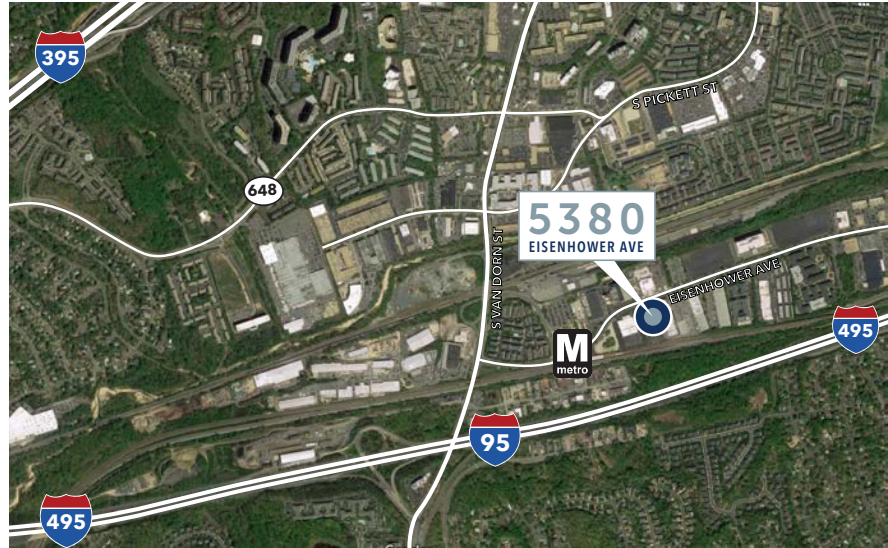
 **TRANSWESTERN**[®]

Caulley Deringer
703.749.9415
caulley.deringer@transwestern.com

Andrew Hassett
703.749.9467
andrew.hassett@transwestern.com

PROPERTY FEATURES

- Dock high loading
- Warehouse ceiling height 12' - 13' clear
- Zoned OCH
- Immediate access to I-495/I-95
- 2 minute walk to Van Dorn Metro Station
- Frontage on Eisenhower Ave



AVAILABILITIES

BUILDING TWO

Warehouse Suite

- **Suite A: 5,850 SF**
Rate \$14.50/NNN

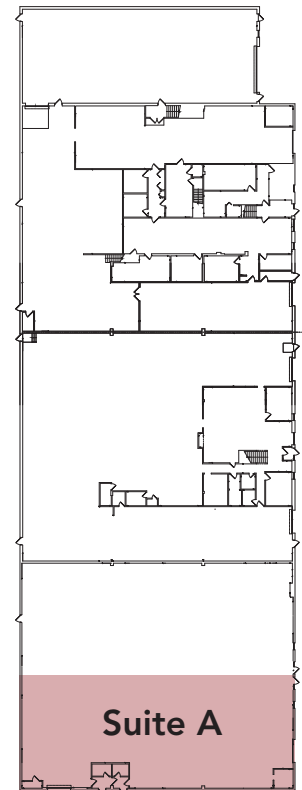
BUILDING ONE

Office Suite

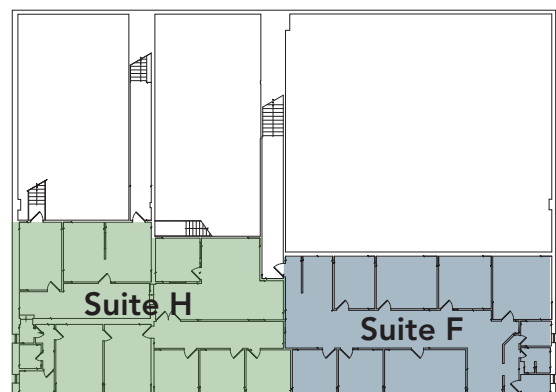
- **Suite H: 2,650 SF (2nd Floor)**
Rate \$10.00/NNN
- **Suite F: 2,500 SF (2nd Floor)**
Rate \$10.00/NNN

*Available in 60 days

BUILDING TWO

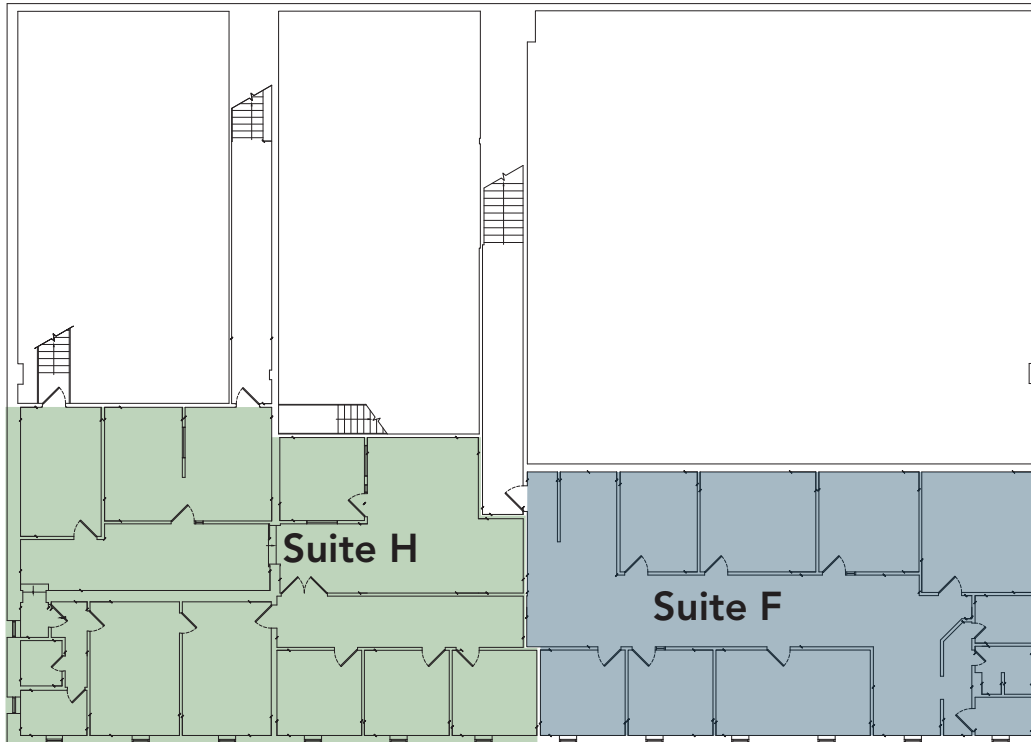


BUILDING ONE



EISENHOWER AVE

BUILDING ONE



Office Suites

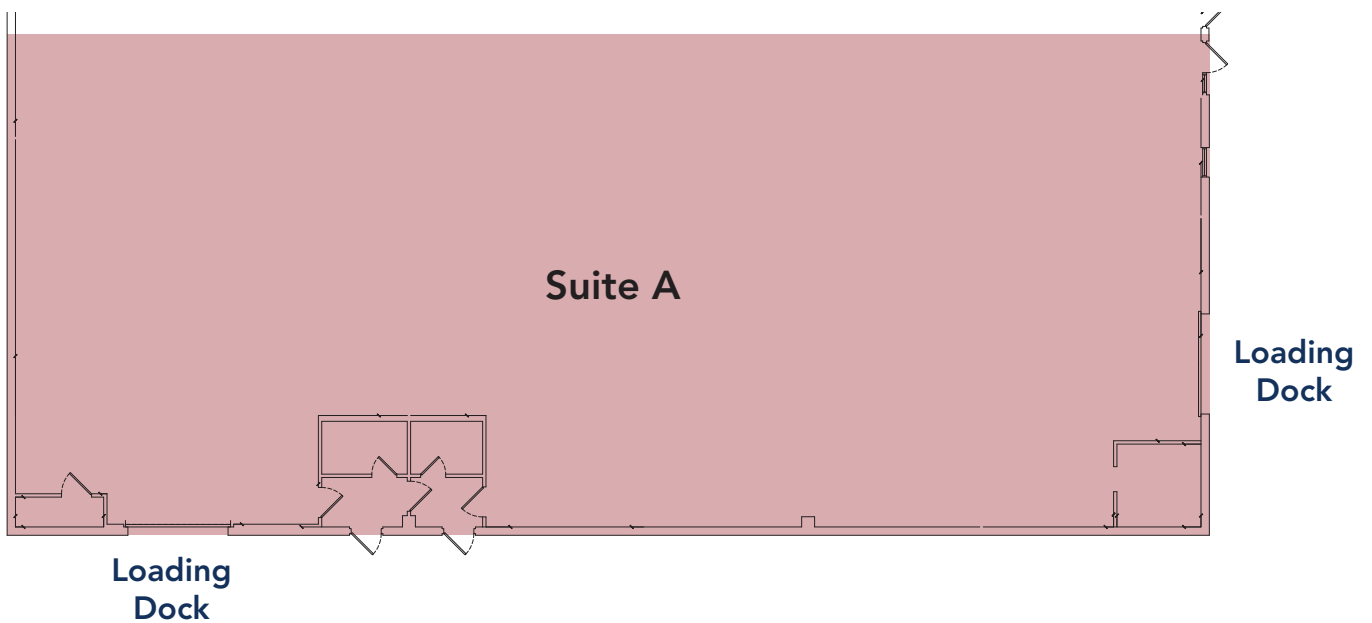
Suite H (2nd floor)
2,650 SF

Suite F (2nd floor)
2,500 SF
*Available in 60 days

BUILDING TWO

Warehouse Suite

Suite A (1st floor)
5,850 SF





Caulley Deringer

703.749.9415

caulley.deringer@transwestern.com

Andrew Hassett

703.749.9467

andrew.hassett@transwestern.com

7900 Tysons One Place
Suite 600
McLean, Va 22102

703.821.0040

www.transwestern.com