

FF30

FAIRFAX BOULEVARD, FAIRFAX VA



STANDALONE VIP SUITES AVAILABLE!

- Highly visible from Route 50
- Easy access to Route 50 and I-66
- Free surface and covered parking
- 3.2/1,000 SF
- Bank, Deli, and Management on-site
- Direct access to the 1C & 2B Metro Bus routes
- Strong ownership and property management

AVAILABILITIES

Second floor:	Suite 200-B	VIP Suite	Available Immediately
	Suite 200-C	VIP Suite	Available Immediately
	Suite 200-F	VIP Suite	Available Immediately
	Suite 200-H	VIP Suite	Available Immediately

Third floor:	Suite 303	2,167 SF	Available Immediately
---------------------	-----------	----------	-----------------------

SECOND FLOOR

VIP Suite B

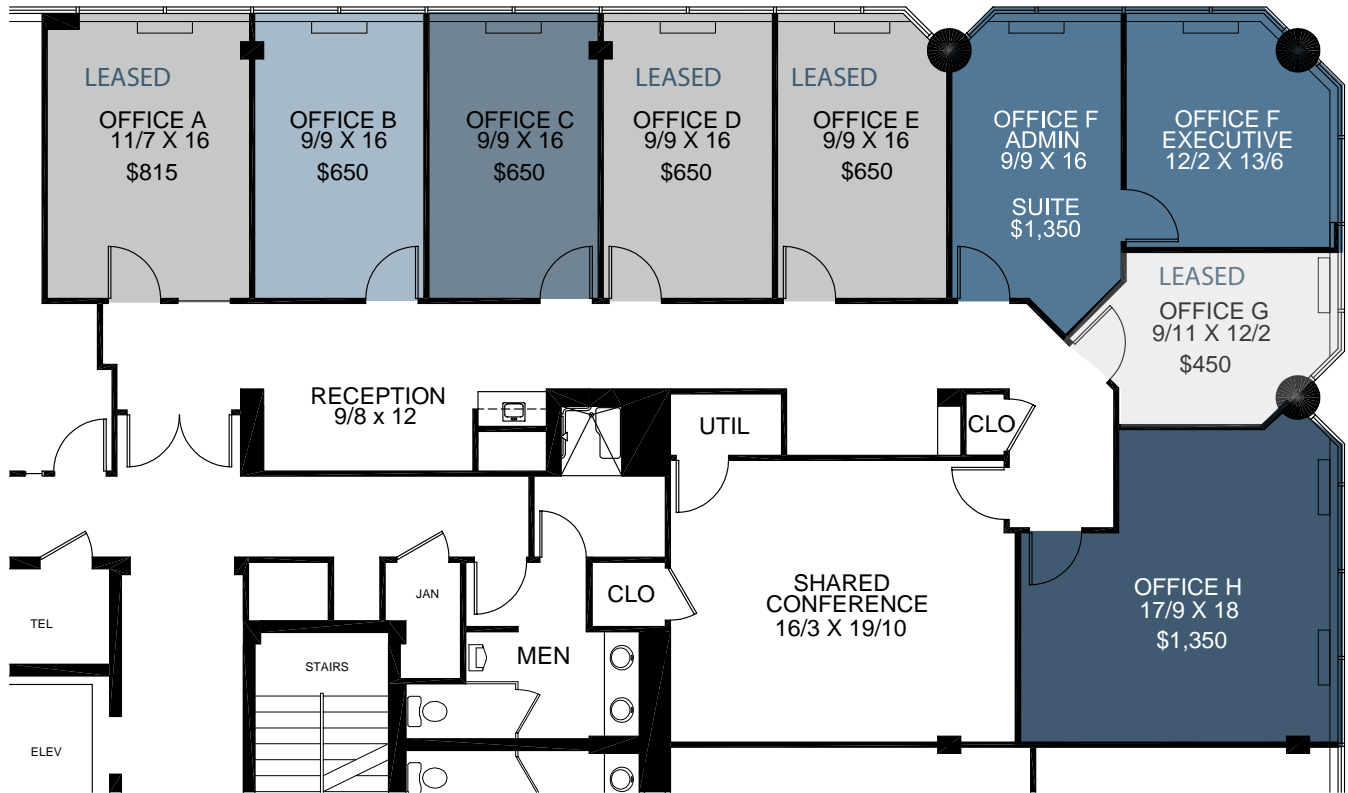
Available Immediately

VIP Suite C

Available Immediately

VIP Suite F

Available Immediately



VIP Suite H

Available Immediately

THIRD FLOOR

Suite 303
2,167 SF





FOR MORE INFORMATION,
PLEASE CONTACT:

Alan Asman

703. 749. 9464

alan.asman@transwestern.com

Bernie McKeever, Jr.

703. 749. 9462

bernard.mckeever@transwestern.com

Cole McCarthy

703. 749. 9401

cole.mccarthy@transwestern.com



7900 Tysons One Place, Suite 600
McLean, VA 22102 | 703.821.0040
transwestern.com